

SHARP

AR-5520/S/D/N

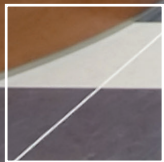
AR-5516/S/D/N

Digital Multifunctional System

Preliminary Product Information



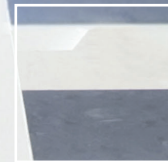
POWERFUL, VERSATILE DESKTOP MFPs FOR ALL YOUR OFFICE NEEDS



20/16 PPM
IN B/W



STD S-PLC
TECHNOLOGY FOR
FASTER PRINTING



BUILT-IN B/W
SCANNING
600 x 600 dpi**



EXTENSIVE
PAPER CAPACITY
1,100 SHEETS

Highly Productive

- 8 versatile models to suit your office from basic printing to scanning, duplex copying and network printing functions
- Speedy output of max. 20 ppm*¹ (AR-5520 versions) and 16 ppm*¹ (AR-5516 versions) in black & white
- Quick first copy out time of 7.2 seconds
- Scan Once Print Many function stores scanned original into memory for a production of up to 999 copies of each page
- Extensive paper capacity of max. 1,100 sheets
- Standard 2 x 250 sheet front loading paper trays (1 x 250 sheet tray for AR-5516 versions)
- 100 sheet multi bypass feeder
- Automatically collate multiple sets of copies in page order (excludes S models)
- Standard S-PLC technology for faster printing
- RIP Once/Print Many (ROPM) for fast print data transfer (excludes S models)
- Built-in 600 x 600 dpi A3 B/W scanning enables scanned documents to be digitally organised and filed (excludes S models)
- Optional 40 sheet Single Pass Feeder (SPF) automatically makes copies from a stack of 40 originals (AR-5520/5516 and AR-5520S/5516S models only)
- Built-in duplex module and optional 40 sheet RSPF (Reversing Single Pass Feeder) for improved job efficiency (AR-5520D/5516D and AR-5520N/5516N models only)

- Direct PC connection via USB 2.0 (excludes N models)
- High performance TCP/IP network printing (AR-5520N/5516N models only)

Superb image quality

- 600 dpi and 256 level greyscale ensures finely detailed reproduction
- Digital Auto Exposure provides copy contrast
- Text/Photo Mode recognises photos and text in the documents and hence helps to adjust the copy contrast for the best results
- Automatic Magnification Selection (AMS)

Reduce costs and save energy

- N-Up function prints multiple sheets on a single paper, saving paper
- Toner Save Mode (copy only) prints all solid areas in shade of grey instead of black and this way reduces the toner consumption
- Auto Power Shut-Off minimises energy
- Pre-Heat mode switches off the heat-roller to reduce power consumption

For everyone in the office

- Compact design lets you place it where a conventional copier/printer could never go
- Optional Sharpdesk™ desktop management software lets you easily organise, search, edit, and distribute your scanned documents (excludes S models)

*¹ 12 ppm standard printing for S models only

** Excludes S models

SPECIFICATIONS

AR-5520/S/D/N

AR-5516/S/D/N

Digital Multifunctional System

Preliminary Product Information

General	
Type	Desktop
Engine Speed (max.)	A4, portrait
AR-5520/N/D	20 cpm/ppm
AR-5516/N/D	16 cpm/ppm
AR-5520S	20 cpm/12 ppm
AR-5516S	16 cpm/12 ppm
Paper size	Max. A3, Min. A5 (min. A6R via bypass)
Paper Weight	Tray: 56-90 g/m ² Bypass: 56-200 g/m ²
Paper Capacity	
20ppm models	Standard: 600 sheets (two 250-sheet trays and 100-sheet multi bypass-feeder) Maximum: 1,100 sheets (four 250-sheet trays and 100-sheet multi-bypass tray)
16ppm models	Standard: 350 sheets (one 250-sheet tray and 100-sheet multi-bypass tray) Maximum: 1,100 sheets (four 250-sheet trays and 100-sheet multi-bypass tray)
Warm Up Time	45 sec.
Memory	64MB (16MB AR-5520S/AR-5516S)
Power consumption (max.)	1.2 kW
Power Requirements	Rated local AC Voltage \pm 10%, 50/60Hz
Dimensions (W x D x H)	including document cover
AR-5520 models	590 x 550 x 555 mm
AR-5516 models	590 x 550 x 470 mm
Weight (excludes options)	
AR-5520 models	33.1 kg
AR-5516 models	28.2 kg

Copier	
Original paper size	Max. A3
First copy out time*1	7.2 sec.
Continuous copy	Max. 999 copies
Resolution	Default: 600 x 300 dpi Photo: 600 x 600 dpi
Gradation	256 levels
Zoom range	25 - 400% in 1% increments (50% to 200% using document feeder)
Preset copy ratios	8 ratios (4R/4E)

Printer	
Resolution	600 x 600 dpi
Interface	USB 2.0 (except N models)
Supported OS	Windows® 2000, Windows® XP, Windows® Vista
Printer Language	SPLC ²

Network printer (AR-5520N/AR-5516N models only)	
Resolution	600 x 600 dpi
Network Interface	10Base-T/100Base-TX
Network Protocols	TCP/IP
Supported OS	Windows® 2000, Windows® XP, Windows® Vista
Printer Language	SPLC ²

Scanner (excludes AR-5520S/AR-5516S models)	
Compatibility	TWAIN/WIA(XP only) STI
Resolution	Monochrome (binary): 600 x 600 dpi Grey scale: 300 x 300 dpi
File Formats	BMP, TIFF, PDF
Scanner Utilities	Button Manager, Sharpdesk ³
Scan Destinations	Desktop
Supported OS	Windows® 2000, Windows® XP, Windows® Vista

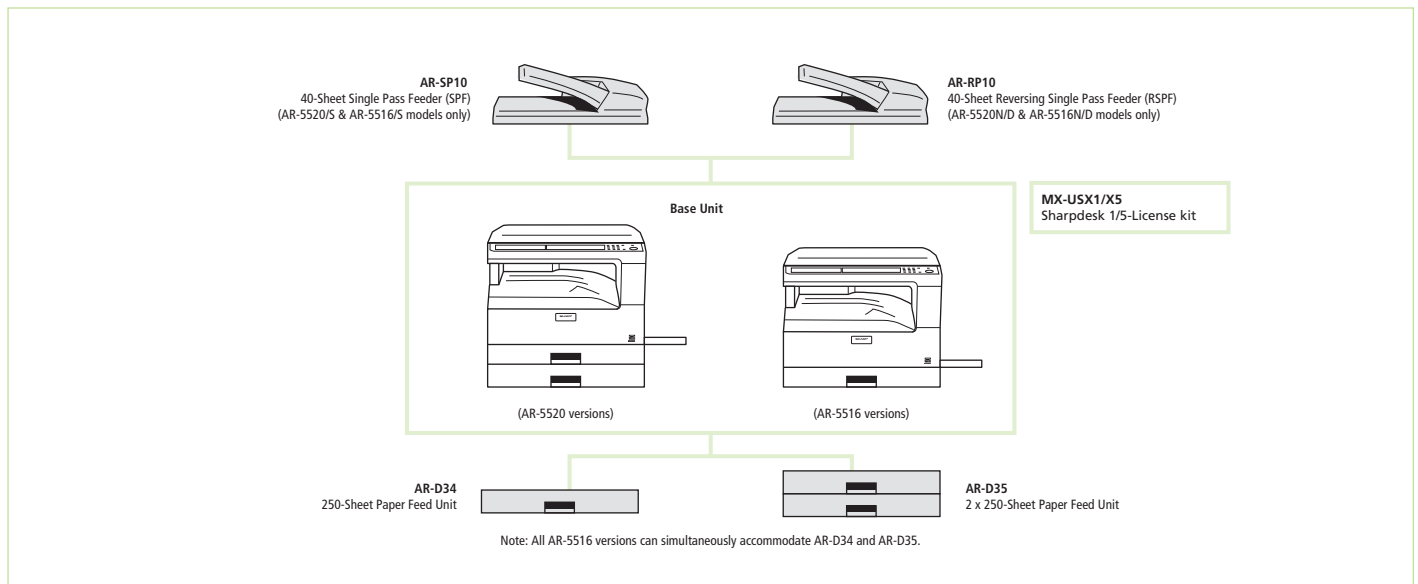
*1 Portrait feeding of A4 sheets from 1st paper tray.

² Sharp Printer Language with Compression, GDI with JBIG compression

³ Optional Sharpdesk licence kit required.

CITRIX®

SAP® Printer Vendor Solution



SHARP

Design and specifications are subject to change without prior notice. All information was correct at time of print. The ENERGY STAR logo is a certification mark and may only be used to certify specific products that have been determined to meet the ENERGY STAR programme requirements. ENERGY STAR is a US registered mark. Windows and Windows Vista are registered trademarks of Microsoft Corporation. SAP and all SAP logos are trademark or registered trademarks of SAP AG in Germany and in several other countries. Citrix is a trademark of Citrix Systems, Inc. and/or one or more of its subsidiaries, and may be registered in the United States Patent and Trademark Office and in other countries. All other company names, product names and logotypes are trademarks or registered trademarks of their respective owners. ©Sharp Corporation 2008 Ref: AR-5520/AR-5516 data series. All trademarks acknowledged. E&OE.